

# iGUIDE QUICK START GUIDE



Thank you for choosing the iGUIDE PLANIX camera system. To get started:



## CHARGE

The PLANIX smart battery is shipped in sleep mode. Before it can be used, the battery must be plugged in to charge for >30 seconds in order to disengage sleep mode.

1. Remove the PLANIX camera system, system battery, and power supply from the carrying case.
2. Insert the system battery into the PLANIX.
3. Plug the power supply into an electrical outlet.  
*On the power supply, a blue light should turn on to indicate that the power supply is working.*
4. Plug the power supply into the charging port.  
*After ~10 seconds, the charging indicator light on the recessed user interface should turn on and begin flashing green to indicate that the PLANIX is charging. Normal flashing interval is ~1 second on and ~1 second off. Once fully charged, the charging indicator light will appear solid green.*
5. Once the PLANIX is fully charged, unplug the system from the power supply.
6. Unplug the power supply from the electrical outlet.



## CONNECT

1. Power on the PLANIX by pressing the power button.  
*Wait a few seconds for the status indicator to stop blinking.*
2. Look for the “planix-xxxxxx” Wi-Fi network on your smart device and select it.  
*You may receive a message on your smart device which says that the internet is unavailable upon connecting; this is normal. PLANIX is not, and does not require, an internet connection.*
3. Enter the default Wi-Fi password (this is your camera’s serial number).
4. Open a web browser.
5. Enter the IP address “192.168.5.1” into the URL field.
6. Once the Survey web app loads, save it as a bookmark in your web browser or add it to the home screen of your smart device for easy access in the future.



## CONTACT

### iGUIDE Head Office

1-519-568-1723  
1-844-568-1723 (Toll-Free)

### iGUIDE Service Provider Support

1-226-546-1723  
1-855-505-1723 (Toll-Free)

### iGUIDE Support Resources

Create a ticket:  
[support.youriguide.com](https://support.youriguide.com)

Knowledge Base Articles:  
[support.youriguide.com/support/solutions](https://support.youriguide.com/support/solutions)

Welcome page:  
[goiguide.com/welcome](https://goiguide.com/welcome)

Training Resources:  
[goiguide.com/iguide-planix-training](https://goiguide.com/iguide-planix-training)

Download Stitch & Camera Manual:  
[goiguide.com/downloads](https://goiguide.com/downloads)



Please consult the iGUIDE PLANIX User Manual for warnings, product safety information, and complete operating instructions.

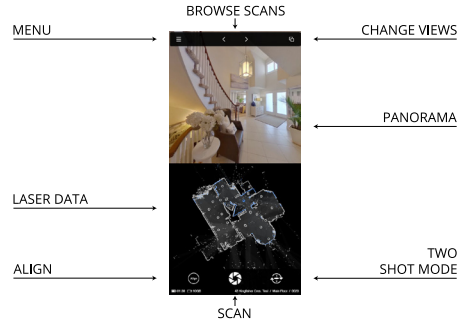
# iGUIDE QUICK REFERENCE



## PLANIX

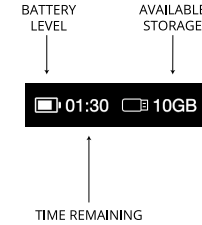


## SURVEY

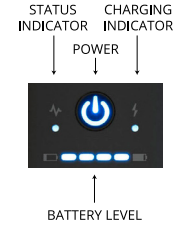


## INDICATORS

Survey:



PLANIX:



## MAPPING SPACE

1. Create a project
2. Enter exterior wall thickness (optional)
3. Create a floor
4. Create a scan in every space
5. Create new floors when necessary



## CREATING SCANS

1. Place the camera in a suitable location
2. Tap the Scan button and wait for the chime
3. Move to the next suitable location
4. Tap the Scan button again
5. If the latest scan wasn't aligned properly, press the Align button to align the scan manually\*

\*For automatic alignment, Auto Align must be toggled on in Survey Settings



## EDITING DATA

1. Copy data from USB drive to your computer
2. Open project folder in Stitch
3. Check scan alignment
4. Check panorama color, levels and gamma
5. Hide panoramas as necessary
6. Export data
7. Upload data to the iGUIDE Portal ([manage.youriguide.com](https://manage.youriguide.com))